



# ORGANIZATIONAL CHARTS

BUNKER HILL COMMUNITY COLLEGE  
250 NEW RUTHERFORD AVENUE  
BOSTON, MA 02129-2925  
**MAY 7, 2024**

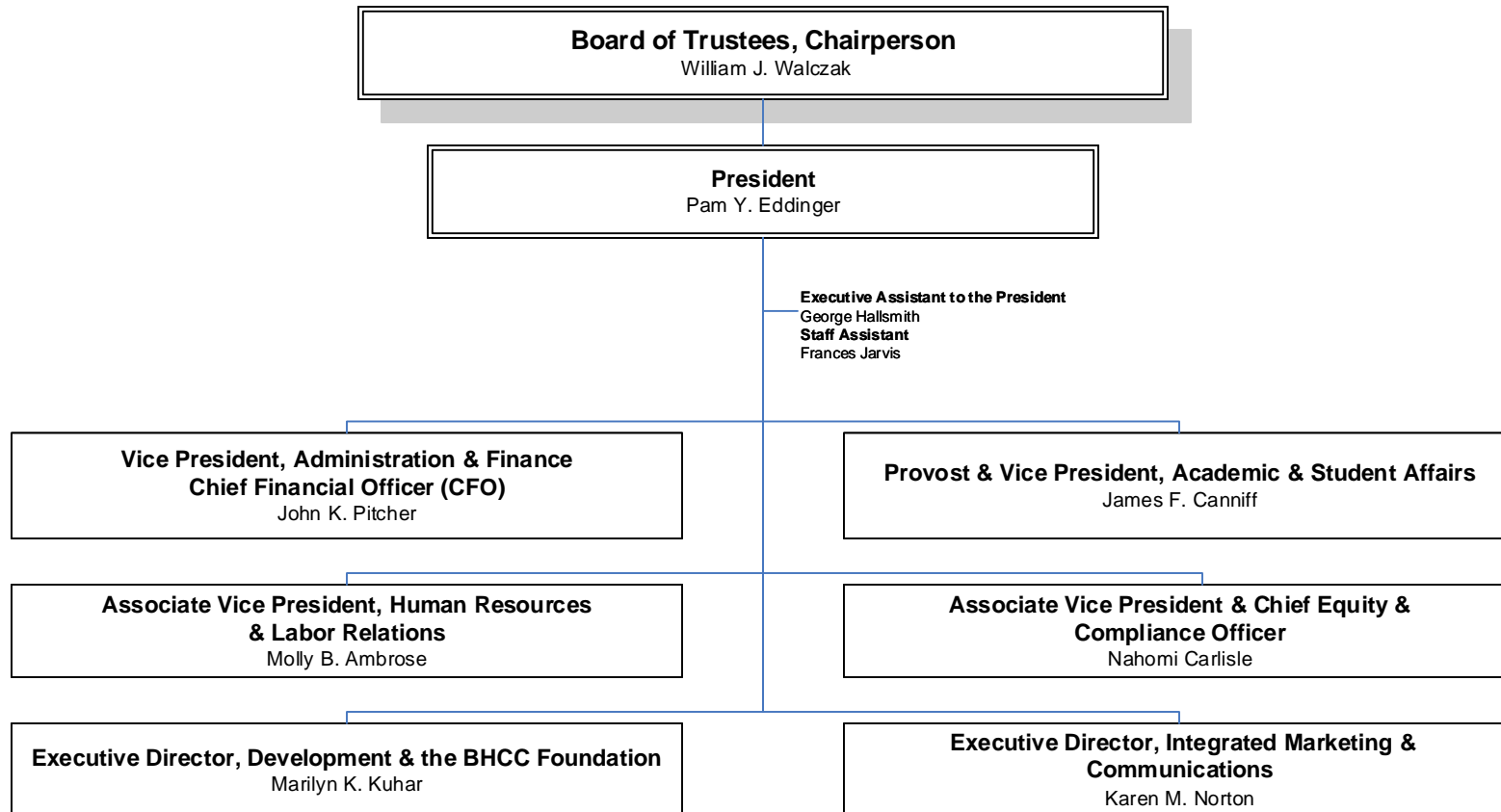
# TABLE OF CONTENTS

| <b>TABLE OF CONTENTS</b>                          |  |                 |   |
|---|--|-----------------|---|
| <b>EXECUTIVE DIVISION</b>                         |  | <b>CHART 1</b>  | <b>DIVISION OF ACADEMIC &amp; STUDENT AFFAIRS (con't)</b> |
| HUMAN RESOURCES                                   |  | CHART 1A        | ACADEMIC AFFAIRS (RESEARCH & ASSESSMENT) CHART 20         |
| INTEGRATED MARKETING & COMMUNICATIONS             |  | CHART 1B        | COLLEGE EVENTS & CULTURAL PLANNING CHART 2P               |
| DEVELOPMENT & BHCC FOUNDATION                     |  | CHART 1C        |   |
| EQUITY AND COMPLIANCE OFFICER                     |  | CHART 1D        |   |
| <b>DIVISION OF ADMINISTRATION &amp; FINANCE</b>   |  | <b>CHART 1E</b> |   |
| ADMINISTRATION & FINANCE                          |  | CHART 1F        |   |
| FACILITIES MANAGEMENT                             |  | CHART 1G        |   |
| STUDENT FINANCIAL SERVICES                        |  | CHART 1H        |   |
| GRANTS DEPARTMENT                                 |  | CHART 1I        |   |
| PUBLIC SAFETY                                     |  | CHART 1J        |   |
| INFORMATION SERVICES                              |  | CHART 1K        |   |
| <b>DIVISION OF ACADEMIC &amp; STUDENT AFFAIRS</b> |  | <b>CHART 2</b>  |   |
| <b>ASSOCIATE PROVOST-CHARLESTOWN</b>              |  | CHART 2A        |   |
| BEHAVIORAL, SOCIAL SCIENCES & GLOBAL LEARNING     |  | CHART 2B        |   |
| HUMANITIES & LEARNING COMMUNITIES                 |  | CHART 2C        |   |
| STUDENT AFFAIRS                                   |  | CHART 2D        |   |
| ACADEMIC SUPPORT & COLLEGE PATHWAY PROGRAMS       |  | CHART 2E        |   |
| ONLINE LEARNING & INSTRUCTIONAL INNOVATION        |  | CHART 2F        |   |
| LIBRARY & LEARNING COMMONS                        |  | CHART 2G        |   |
| <b>ASSOCIATE PROVOST-CHELSEA</b>                  |  | CHART 2H        |   |
| HEALTH SCIENCES                                   |  | CHART 2I        |   |
| SCIENCE, ENGINEERING & MATHEMATICS                |  | CHART 2J        |   |
| PROFESSIONAL STUDIES                              |  | CHART 2K        |   |
| CHELSEA CAMPUS-TRIO TALENT SEARCH PROGRAM         |  | CHART 2L        |   |
| WORKFORCE & ECONOMIC DEVELOPMENT                  |  | CHART 2M        |   |
| ENROLLMENT MANAGEMENT & LIFEMAP                   |  | CHART 2N        |   |

# BUNKER HILL COMMUNITY COLLEGE

## EXECUTIVE DIVISION

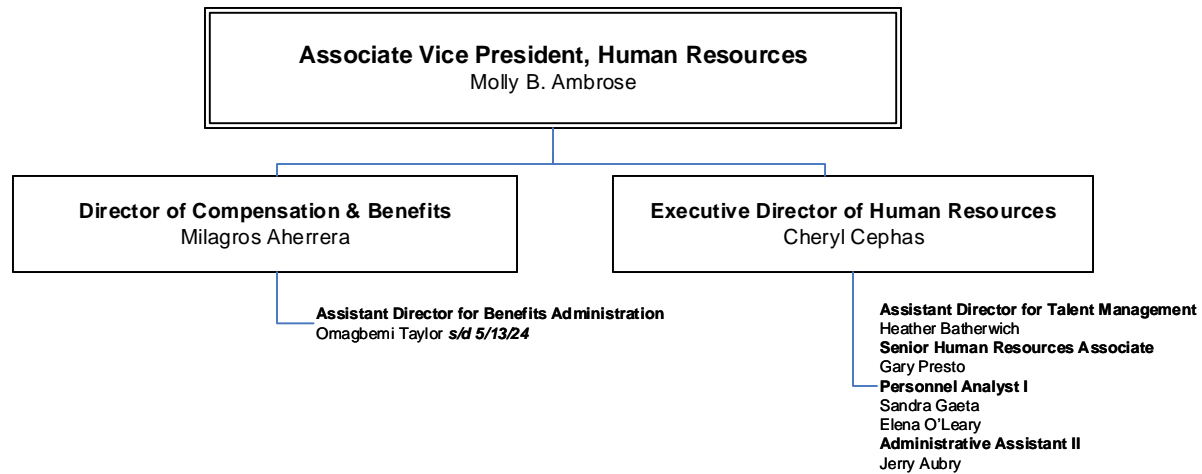
**Executive**  
Organizational Chart #1



# BUNKER HILL COMMUNITY COLLEGE

## EXECUTIVE DIVISION

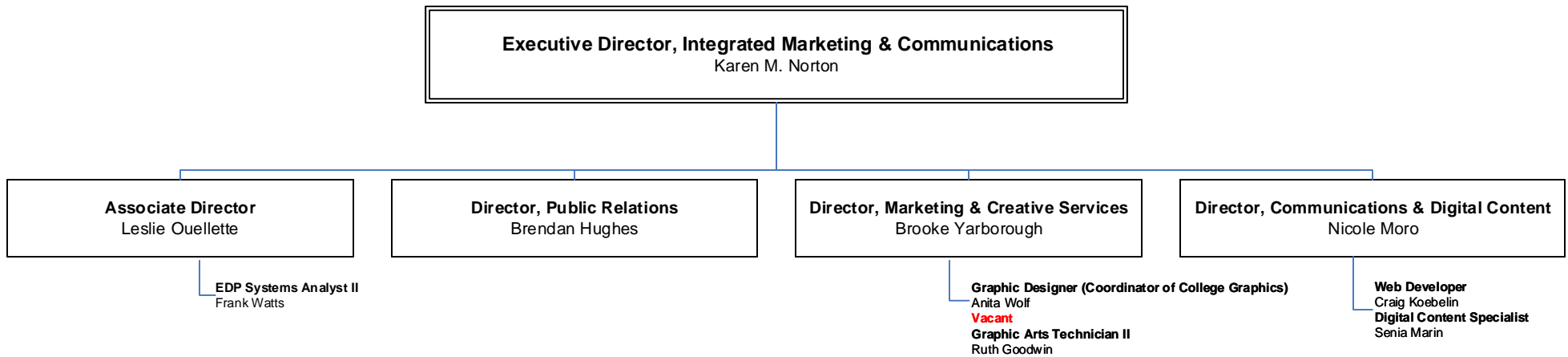
### Human Resources Organizational Chart #1A



# BUNKER HILL COMMUNITY COLLEGE

## EXECUTIVE DIVISION

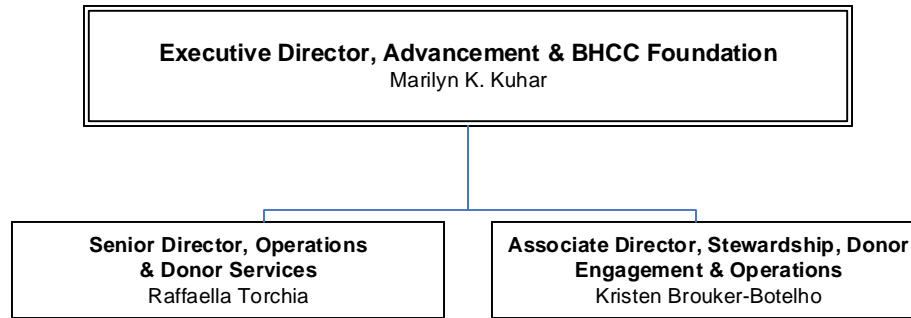
### Integrated Marketing & Communications Organizational Chart #1B



# BUNKER HILL COMMUNITY COLLEGE

## EXECUTIVE DIVISION

**Advancement & BHCC Foundation**  
Organizational Chart #1C



# BUNKER HILL COMMUNITY COLLEGE

## EXECUTIVE DIVISION

**Equity & Compliance**  
Organizational Chart #1D

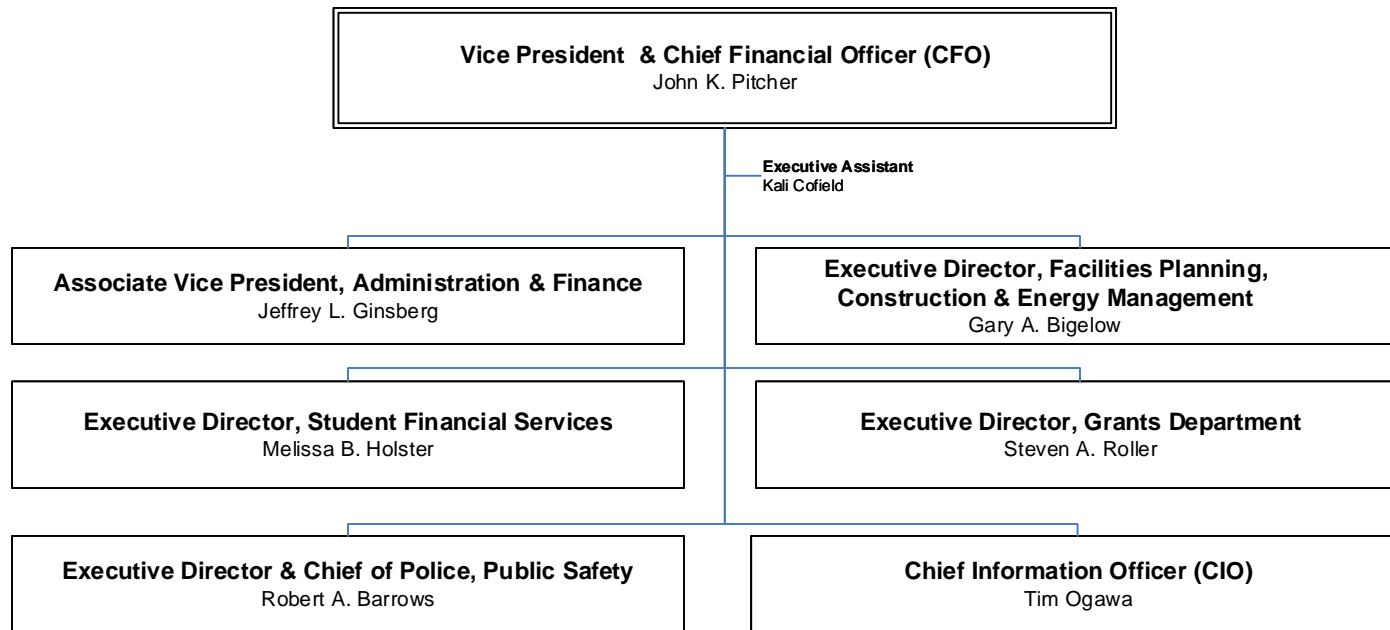
**Associate Vice President & Chief Equity & Compliance Officer**  
Nahomi Carlisle

Deputy for Equity and Title IX Coordinator  
**Vacant**

# BUNKER HILL COMMUNITY COLLEGE

## DIVISION OF ADMINISTRATION & FINANCE

Administration & Finance  
Organizational Chart #1E





# BUNKER HILL COMMUNITY COLLEGE

## DIVISION OF ADMINISTRATION & FINANCE

### Administration & Finance Organizational Chart #1F

**Associate Vice President, Administration & Finance**  
Jeffrey L. Ginsberg

**Director, Facilities Management**  
John Chirichiello

**Comptroller**  
Sze Chun Leung

**Director, Administration & Finance**  
Logan Liberty

**Payroll Director**  
Kathleen O'Brien

**Administrative Assistant II**  
Caroline O'Brien  
**Painter II**  
Bernard Boudreau  
**Painter I**  
Endy Gomez Vergara  
**Carpenter I**  
Brian McGonagle  
**Electrician II**  
**Vacant**  
**Plumber/Steamfitter II**  
**Vacant**  
**Maintainer III**  
Jose Portillo

**Accountant V**  
Kathryn McLaughlin  
Pathmavigi Pathmanathan

**Financial Analyst**  
Martyann Chromik

**Accountant IV**  
Adrian Castro-Cardoso  
Ismail Chowdhury  
Thuloan Phan  
Elaina Singleton

**Assistant Comptroller**  
Rosa Varraso

**Accounting Operations Manager**  
Sarabjit Kaur *s/d 6/3/24*

**Business Analyst**  
Lisa Toto

**Accountant V**  
Debra Rowe  
**Accountant III**  
Thu Dao  
Glenn Moyer  
Tenzin Ngodup  
Carlos Ortiz

**Senior Director of Purchasing**  
Mukti Raut

**Buyer III**  
Sharon Chaney

**Manager, Central Services**  
Anthony Cobuccio

**Reproduction Services Supervisor**  
James Morello  
**Graphic Arts Technician II**  
Diana McKee  
**Storekeeper IV**  
Paul Freeman  
John Keohan

**2nd Class Power Plant Engineer**  
**Vacant**

**Head of Grounds Service Section**  
Joseph DeCristoforo

**3rd Class Power Plant Engineer**  
**Vacant**  
**Utility Plant Operator**  
**Vacant**  
**Steam Fireman I**  
**Vacant**  
**HVAC Mechanic I**  
**Vacant**

**Maintenance Working Foreman**  
Omar Cruz

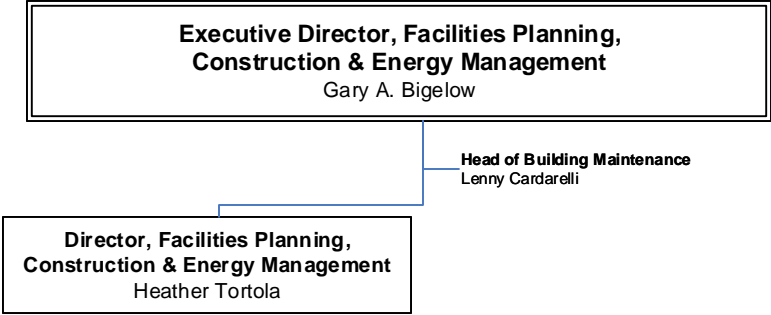
**Maintenance Equipment Operator I**  
Denis Bastien  
Carlos Hernandez  
**Vacant**

**Maintainer III**  
Richard Cuevas  
**Maintainer III**  
Jose Lopez

# BUNKER HILL COMMUNITY COLLEGE

## DIVISION OF ADMINISTRATION & FINANCE

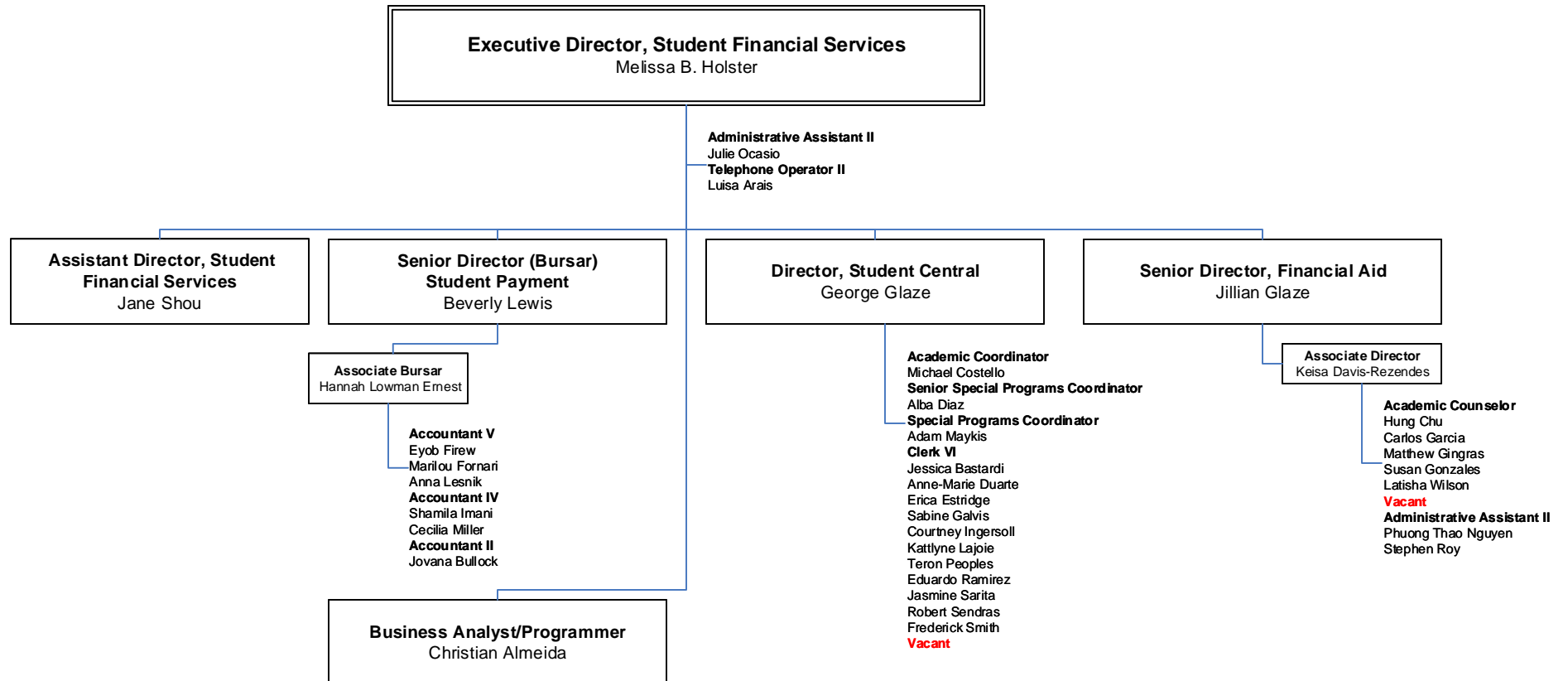
**Facilities Management**  
Organizational Chart #1G



# BUNKER HILL COMMUNITY COLLEGE

## DIVISION OF ADMINISTRATION & FINANCE

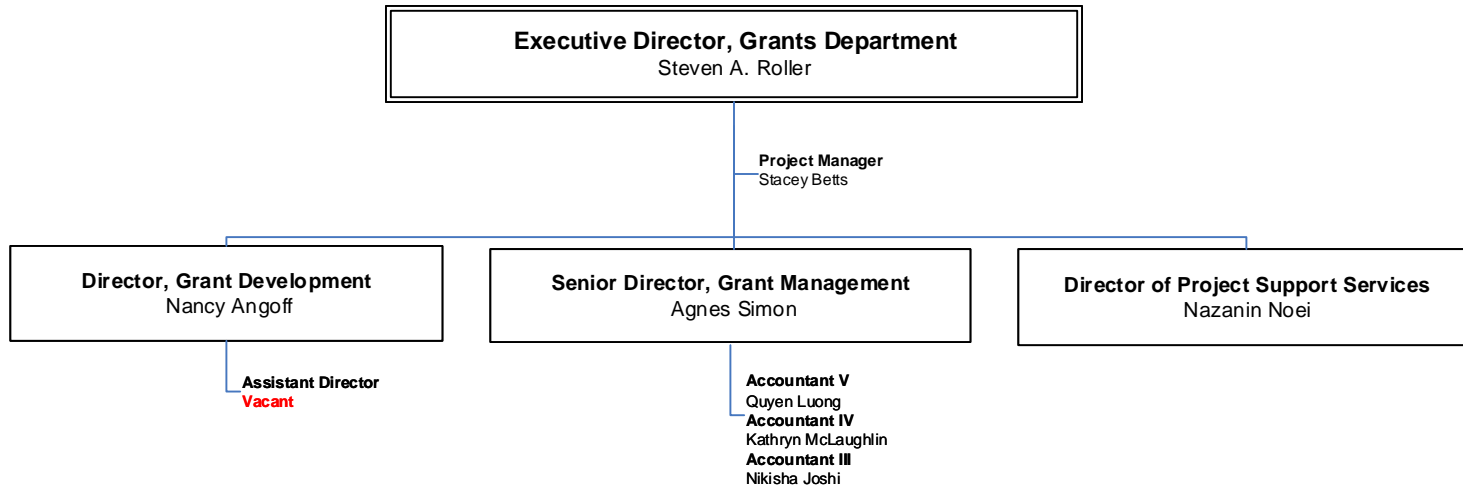
### Student Financial Services Organizational Chart #1H



# BUNKER HILL COMMUNITY COLLEGE

## DIVISION OF ADMINISTRATION & FINANCE

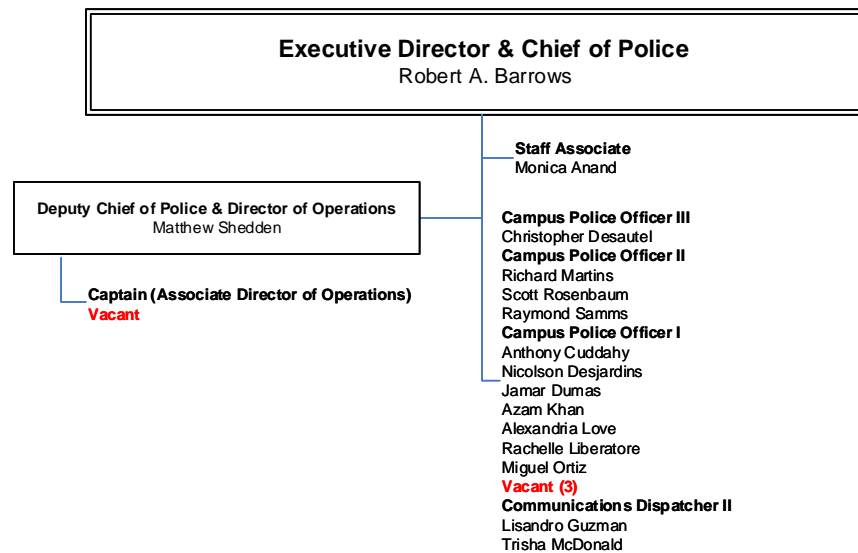
Grants Department  
Organizational Chart #11



# BUNKER HILL COMMUNITY COLLEGE

## DIVISION OF ADMINISTRATION & FINANCE

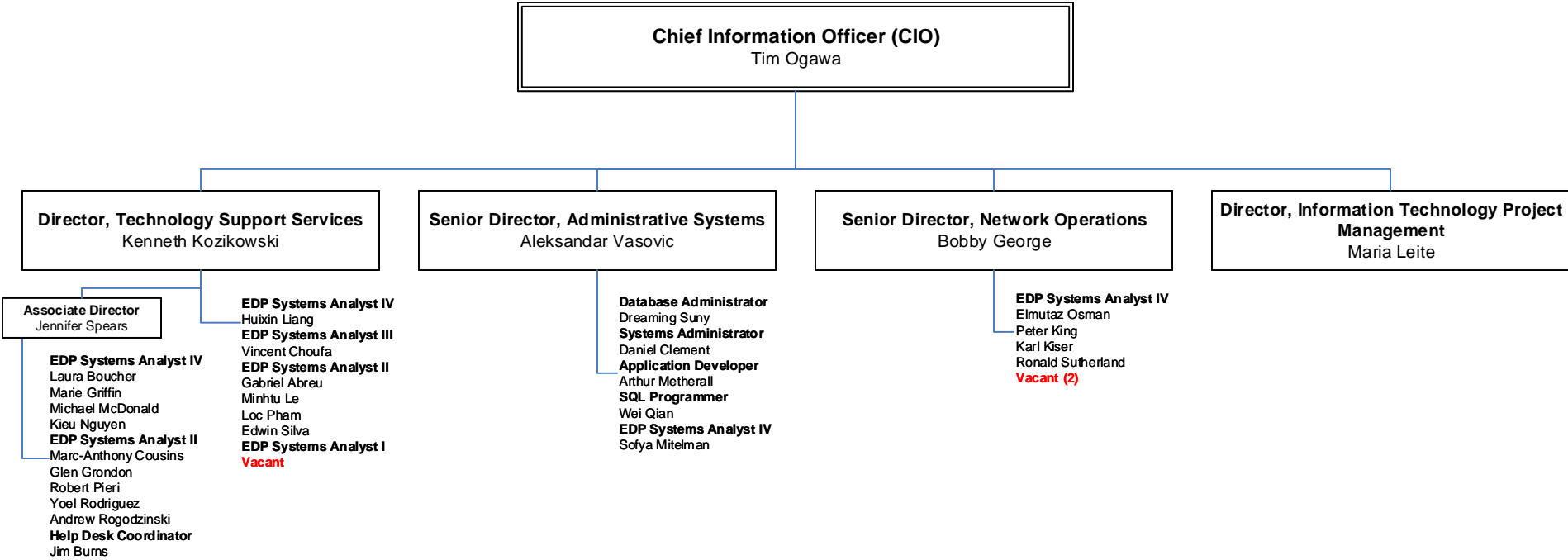
### Public Safety Organizational Chart #1J



# BUNKER HILL COMMUNITY COLLEGE

## DIVISION OF ADMINISTRATION & FINANCE

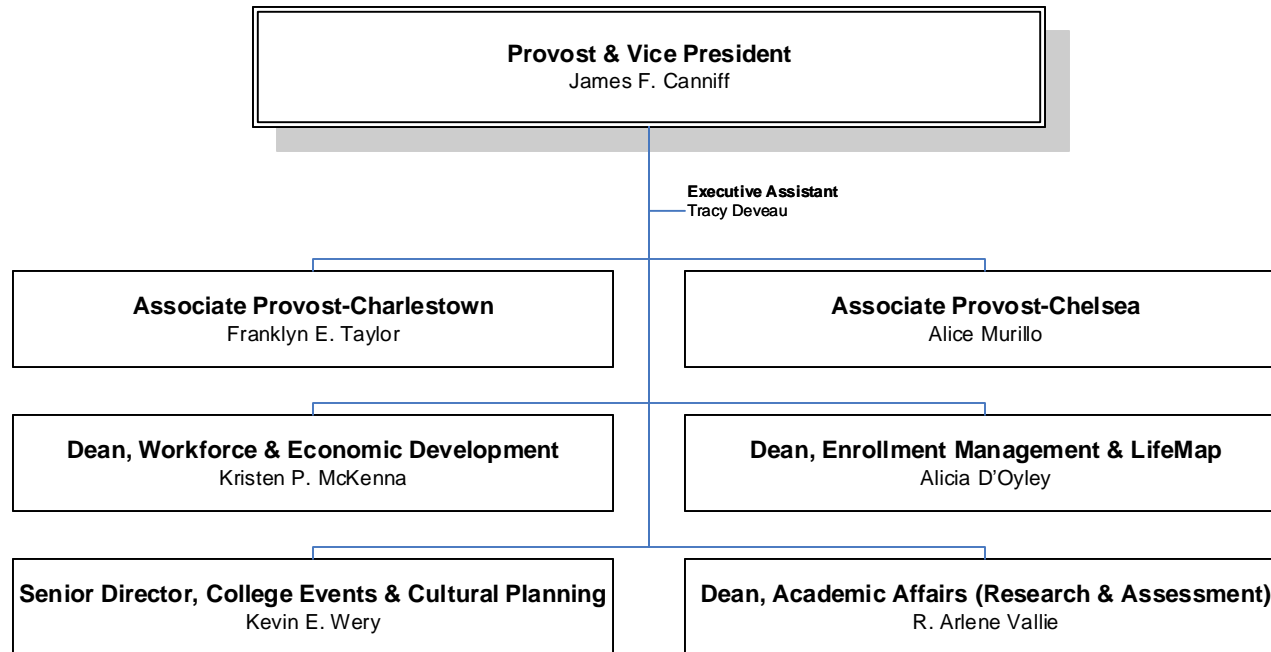
Information Services  
Organizational Chart #1K



# BUNKER HILL COMMUNITY COLLEGE

## DIVISION OF ACADEMIC & STUDENT AFFAIRS

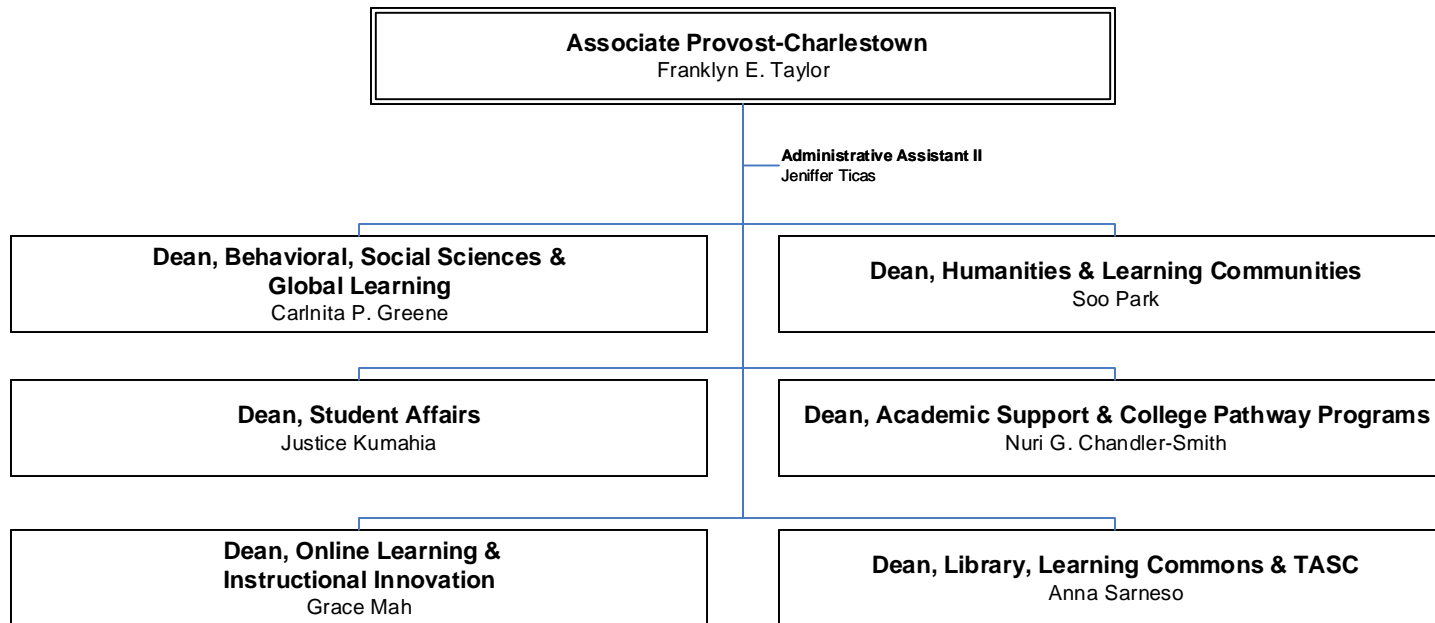
### Academic & Student Affairs Organizational Chart #2



# BUNKER HILL COMMUNITY COLLEGE

## DIVISION OF ACADEMIC & STUDENT AFFAIRS

Associate Provost-Charlestown  
Organizational Chart# 2A

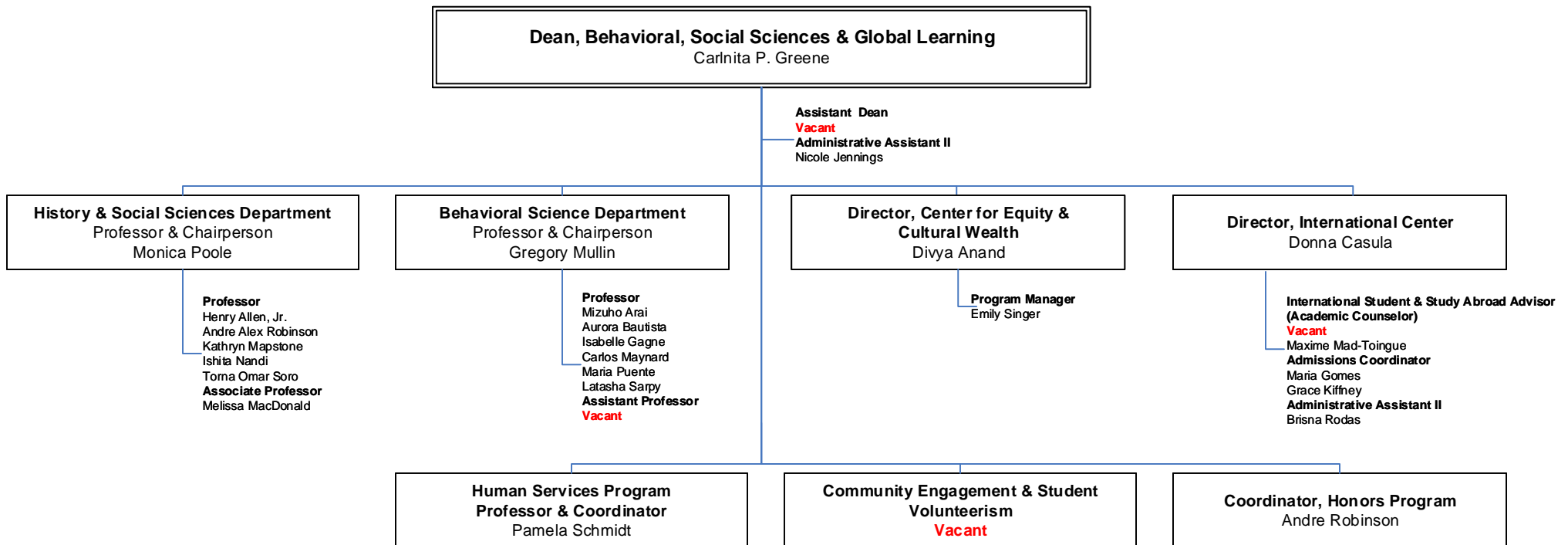




# BUNKER HILL COMMUNITY COLLEGE

## DIVISION OF ACADEMIC & STUDENT AFFAIRS

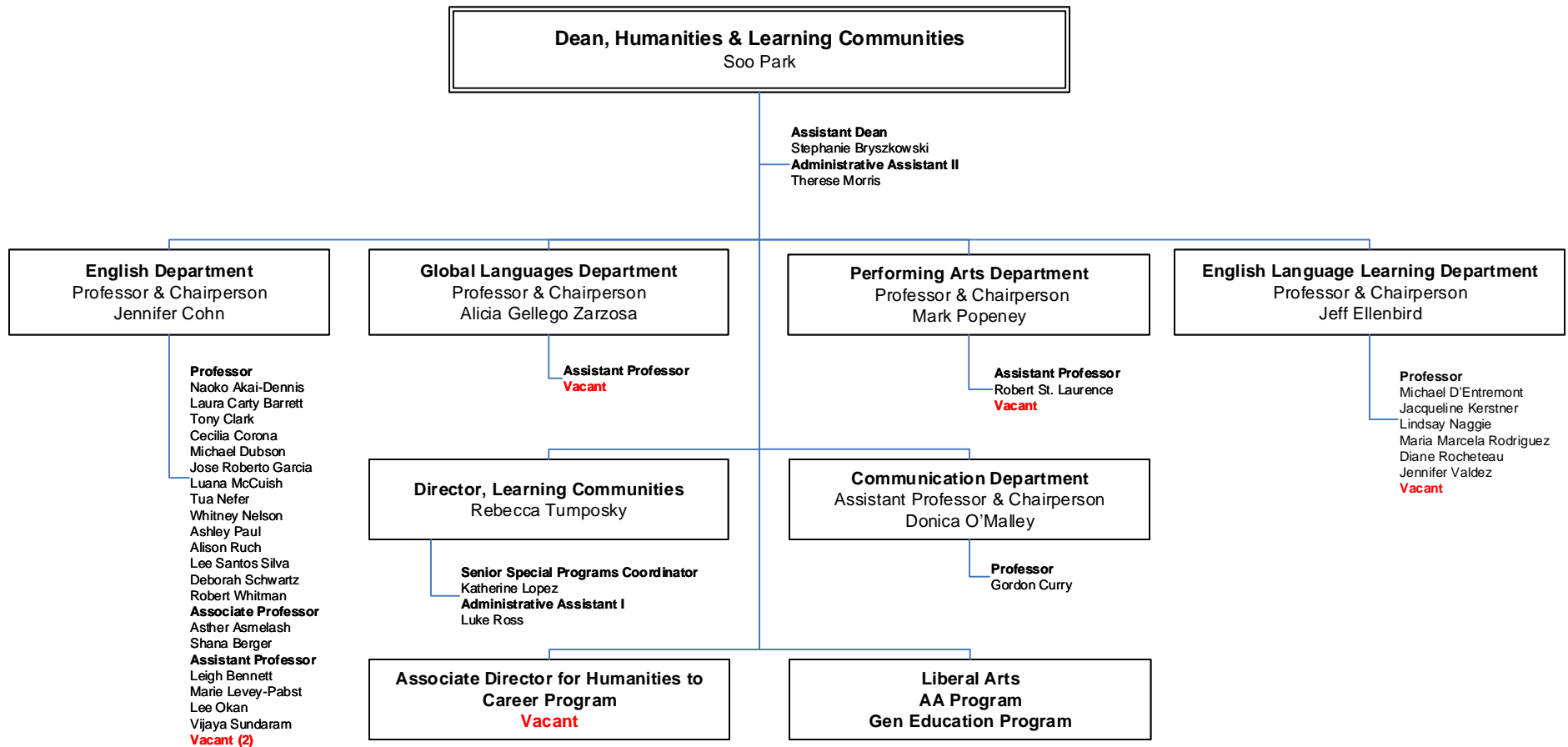
Behavioral, Social Sciences  
& Global Learning  
Organizational Chart #2B



# BUNKER HILL COMMUNITY COLLEGE

## DIVISION OF ACADEMIC & STUDENT AFFAIRS

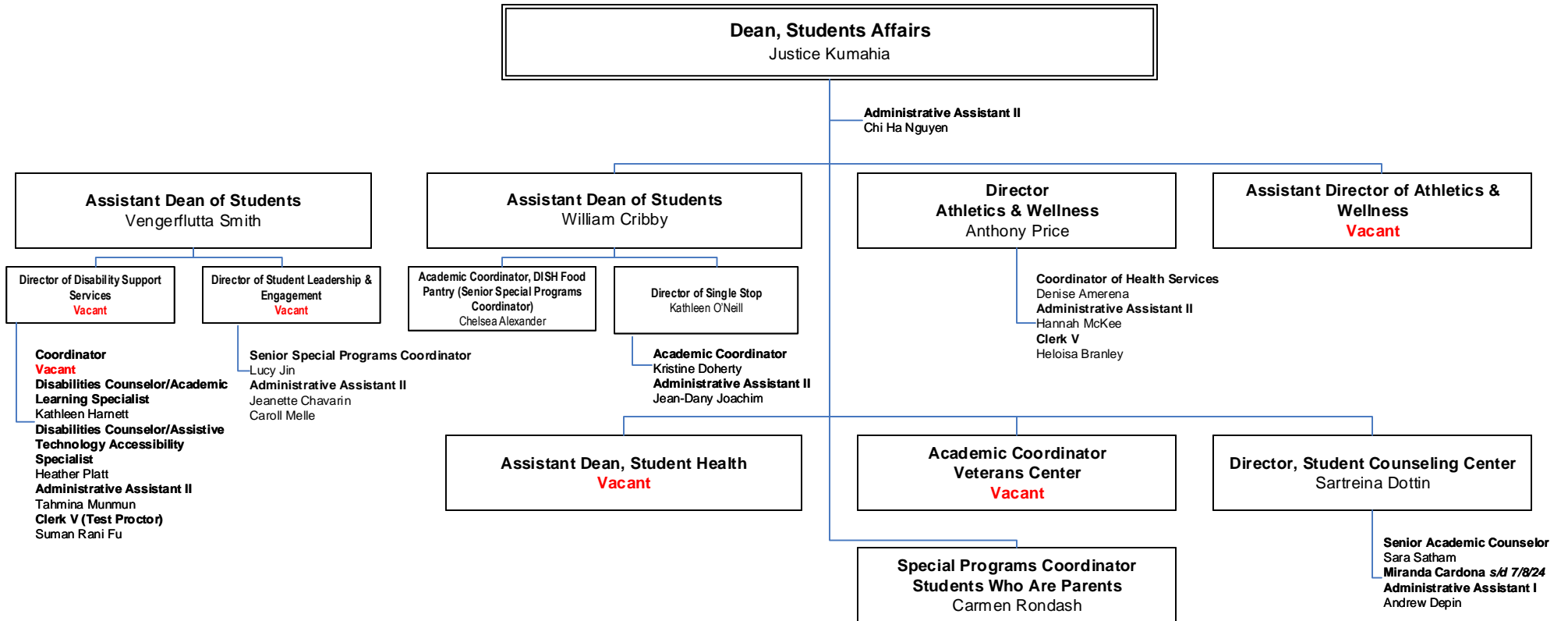
### Humanities & Learning Communities Organizational Chart #2C



# BUNKER HILL COMMUNITY COLLEGE

## DIVISION OF ACADEMIC & STUDENT AFFAIRS

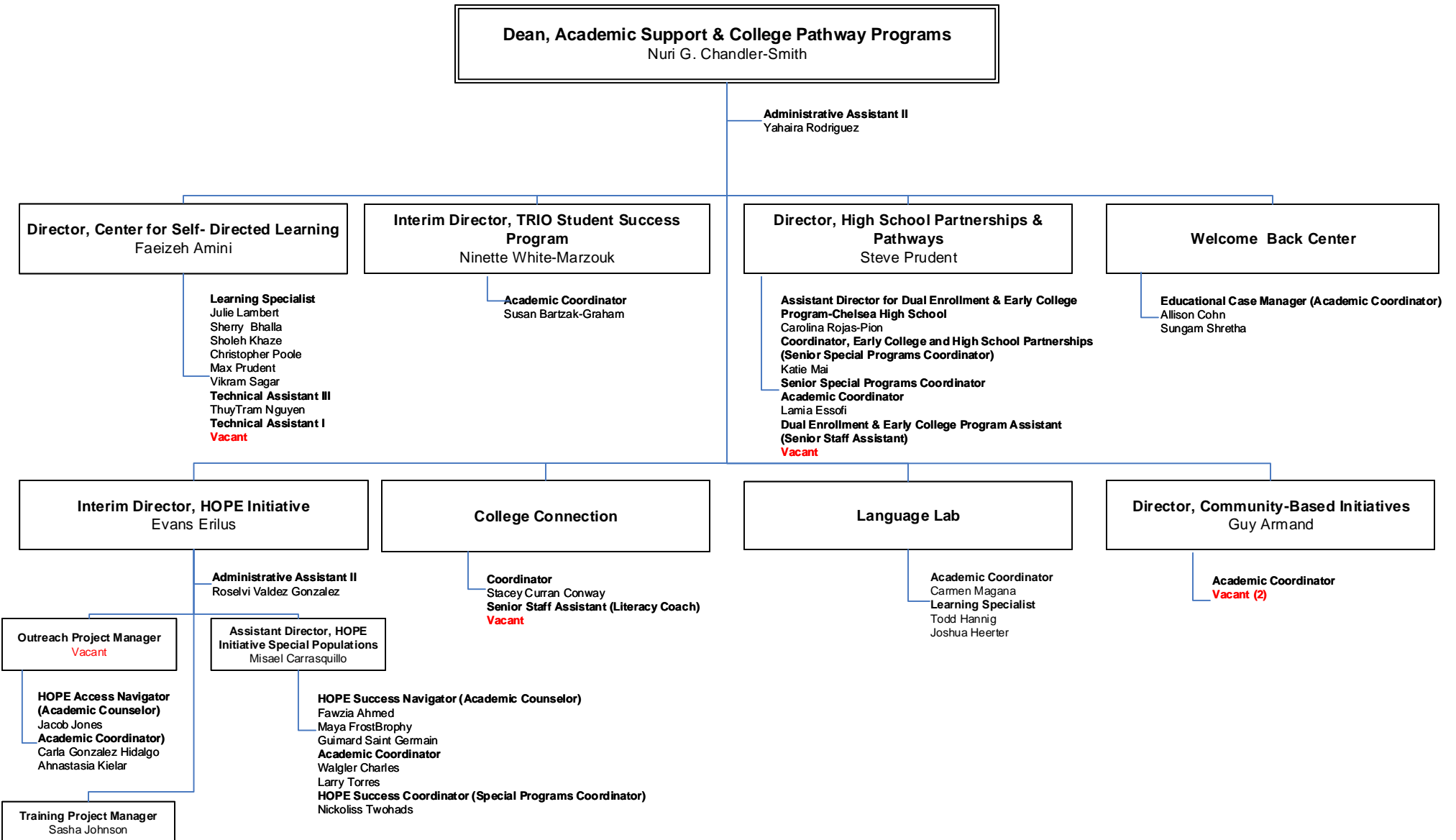
### Student Affairs Organizational Chart #2D



# BUNKER HILL COMMUNITY COLLEGE

## DIVISION OF ACADEMIC & STUDENT AFFAIRS

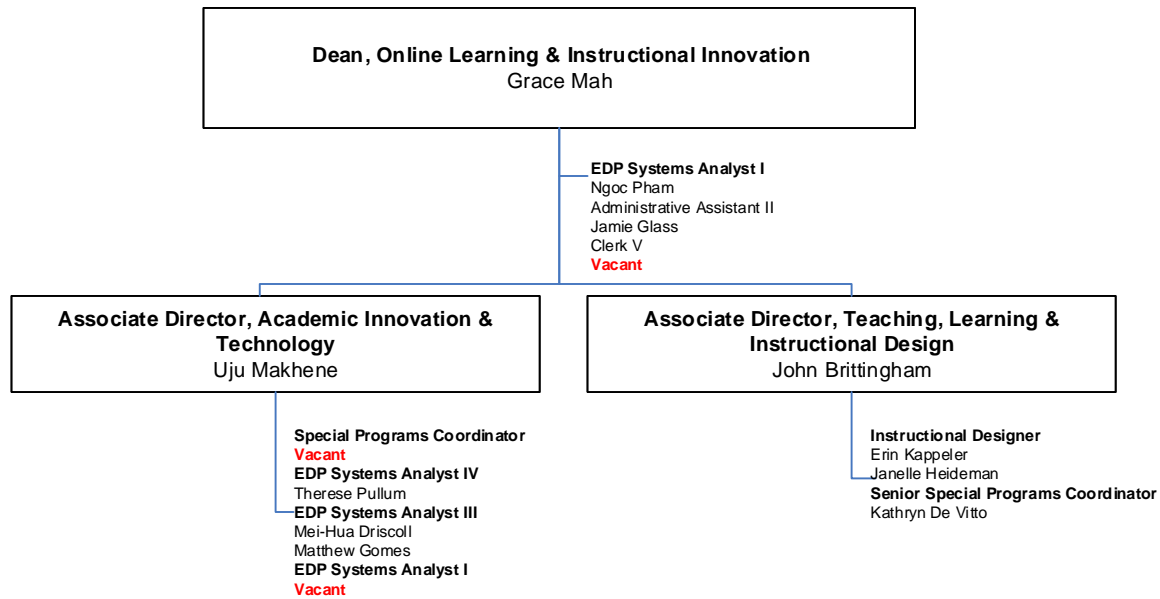
### Academic Support & College Pathway Programs Organizational Chart # 2E



# BUNKER HILL COMMUNITY COLLEGE

## DIVISION OF ACADEMIC & STUDENT AFFAIRS

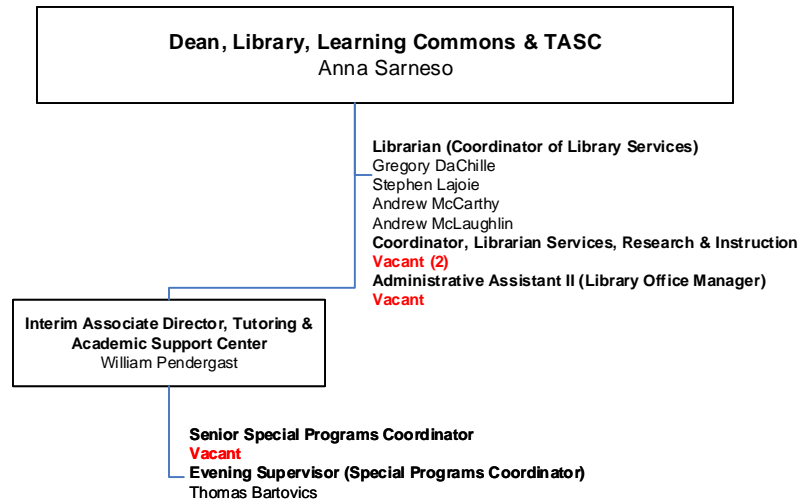
### Online Learning & Instructional Innovation Organizational Chart 2F



# BUNKER HILL COMMUNITY COLLEGE

## DIVISION OF ACADEMIC & STUDENT AFFAIRS

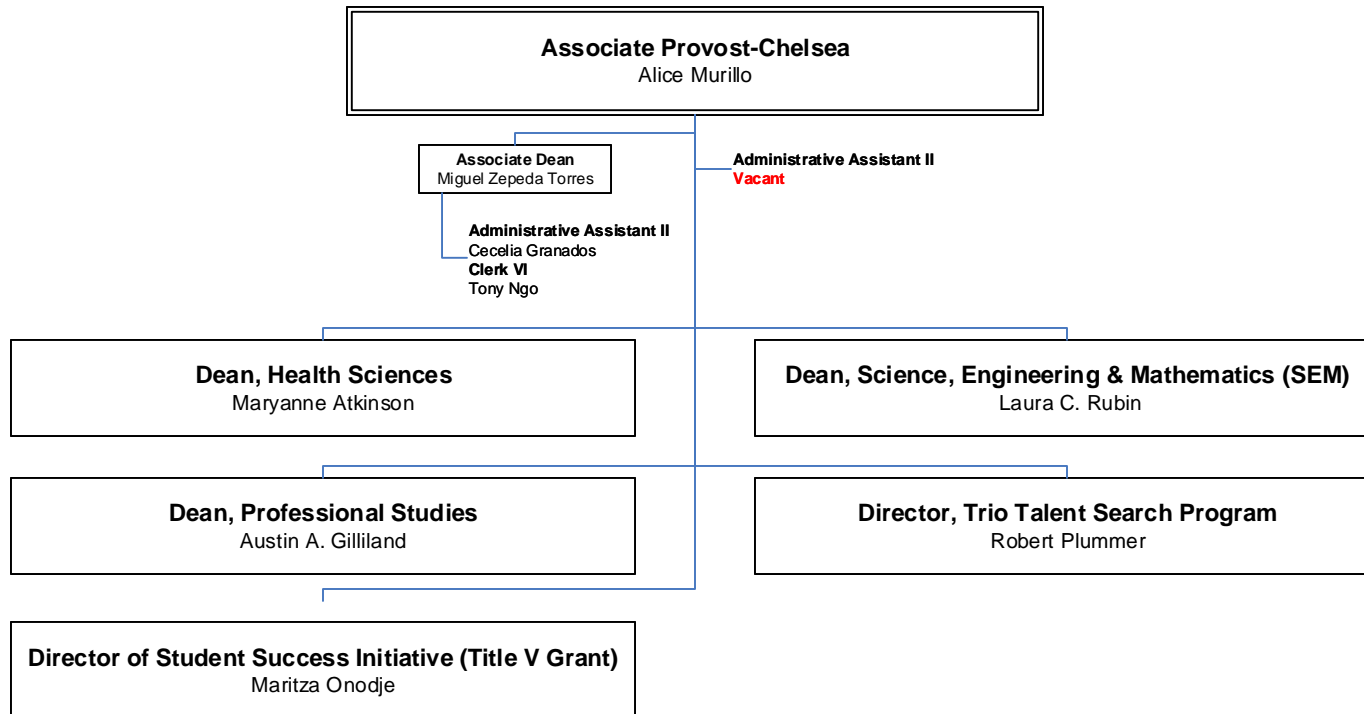
### Library & Learning Commons Organizational Chart #2G



# BUNKER HILL COMMUNITY COLLEGE

## DIVISION OF ACADEMIC & STUDENT AFFAIRS

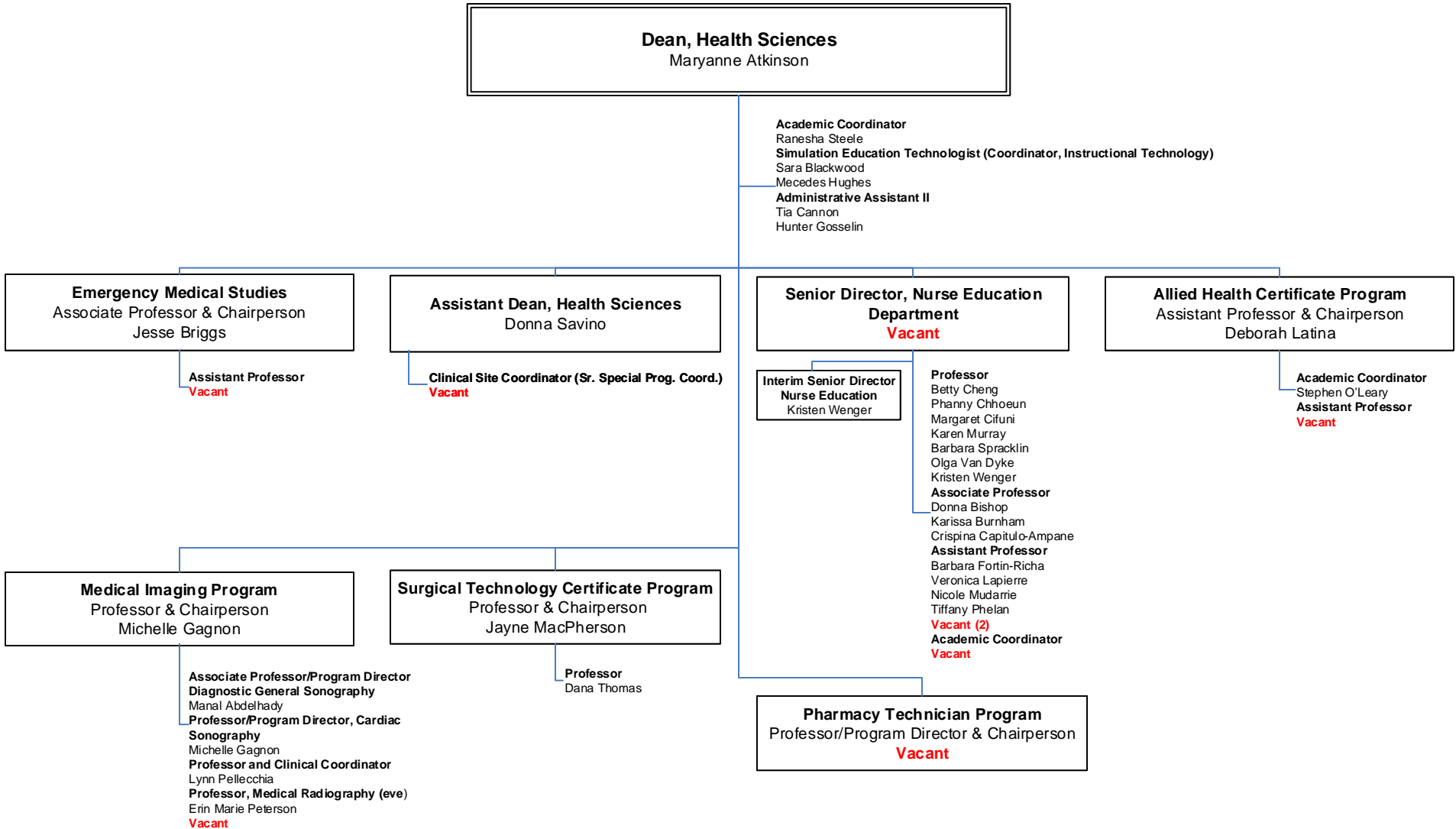
**Associate Provost-Chelsea**  
Organizational Chart 2H



# BUNKER HILL COMMUNITY COLLEGE

## DIVISION OF ACADEMIC & STUDENT AFFAIRS

### Health Sciences Organizational Chart 2I

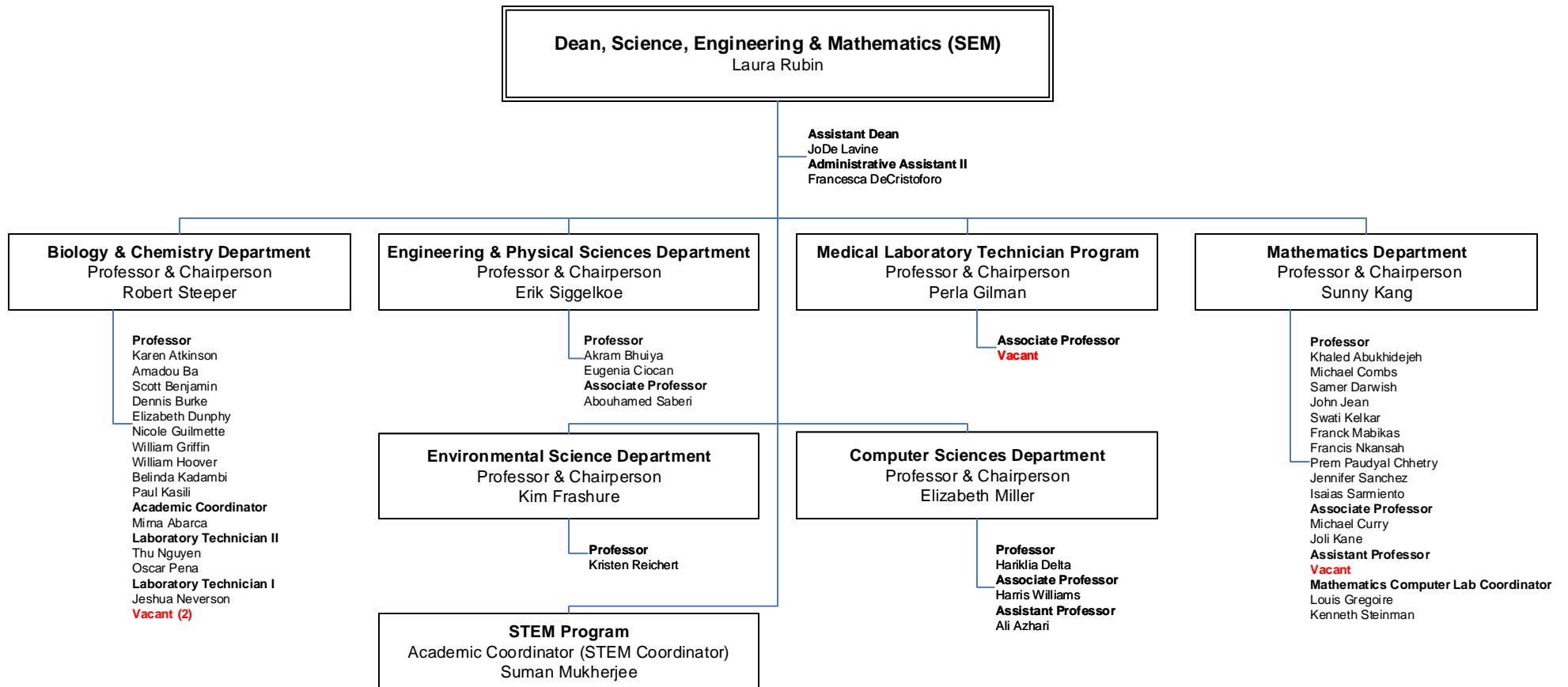




# BUNKER HILL COMMUNITY COLLEGE

## DIVISION OF ACADEMIC & STUDENT AFFAIRS

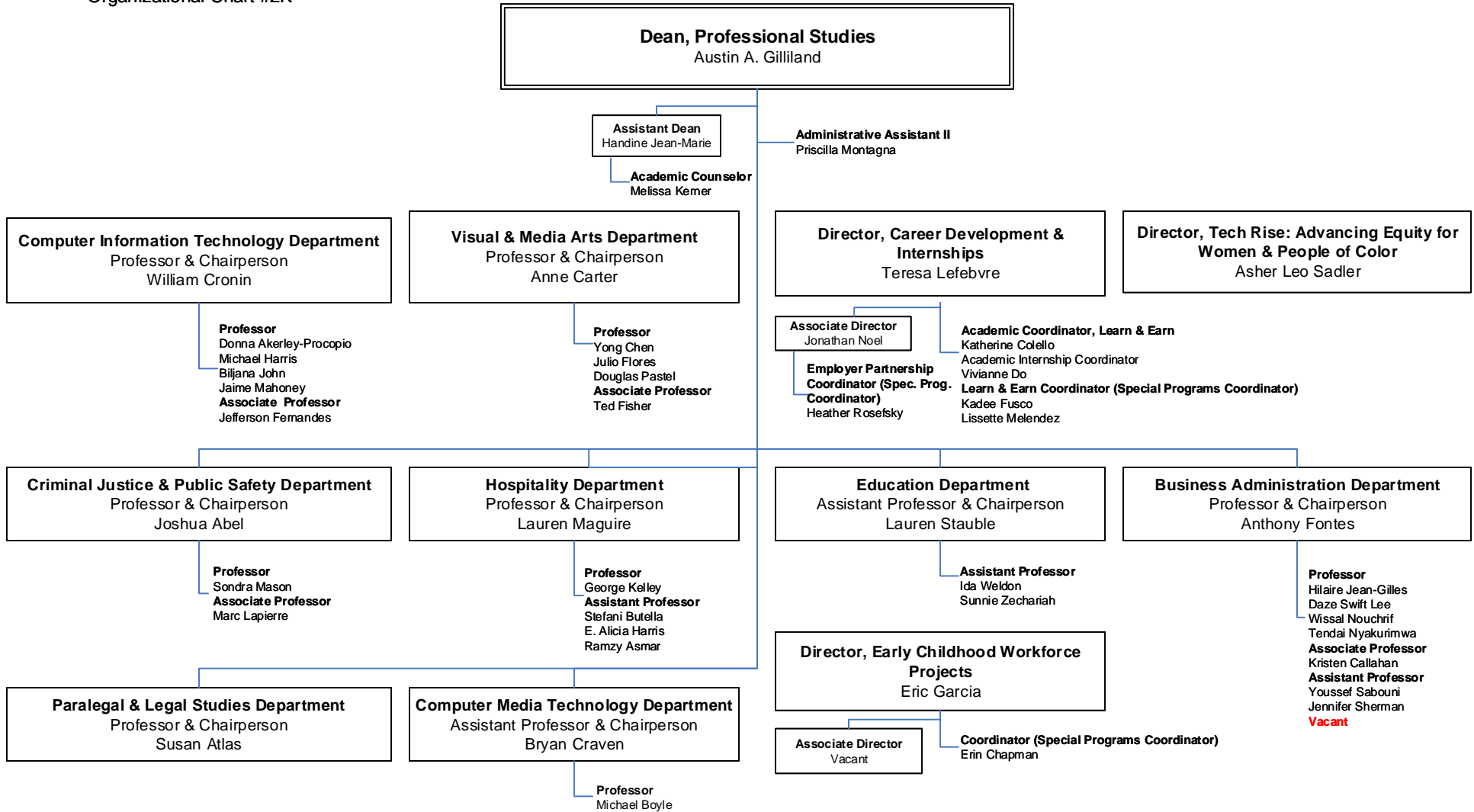
Science, Engineering  
& Mathematics (SEM)  
Organizational Chart #2J



# BUNKER HILL COMMUNITY COLLEGE

## DIVISION OF ACADEMIC & STUDENT AFFAIRS

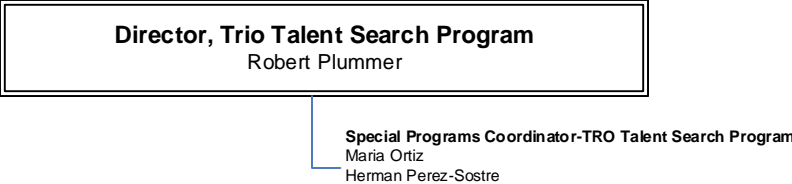
### Professional Studies Organizational Chart #2K



# BUNKER HILL COMMUNITY COLLEGE

DIVISION OF ACADEMIC & STUDENT AFFAIRS

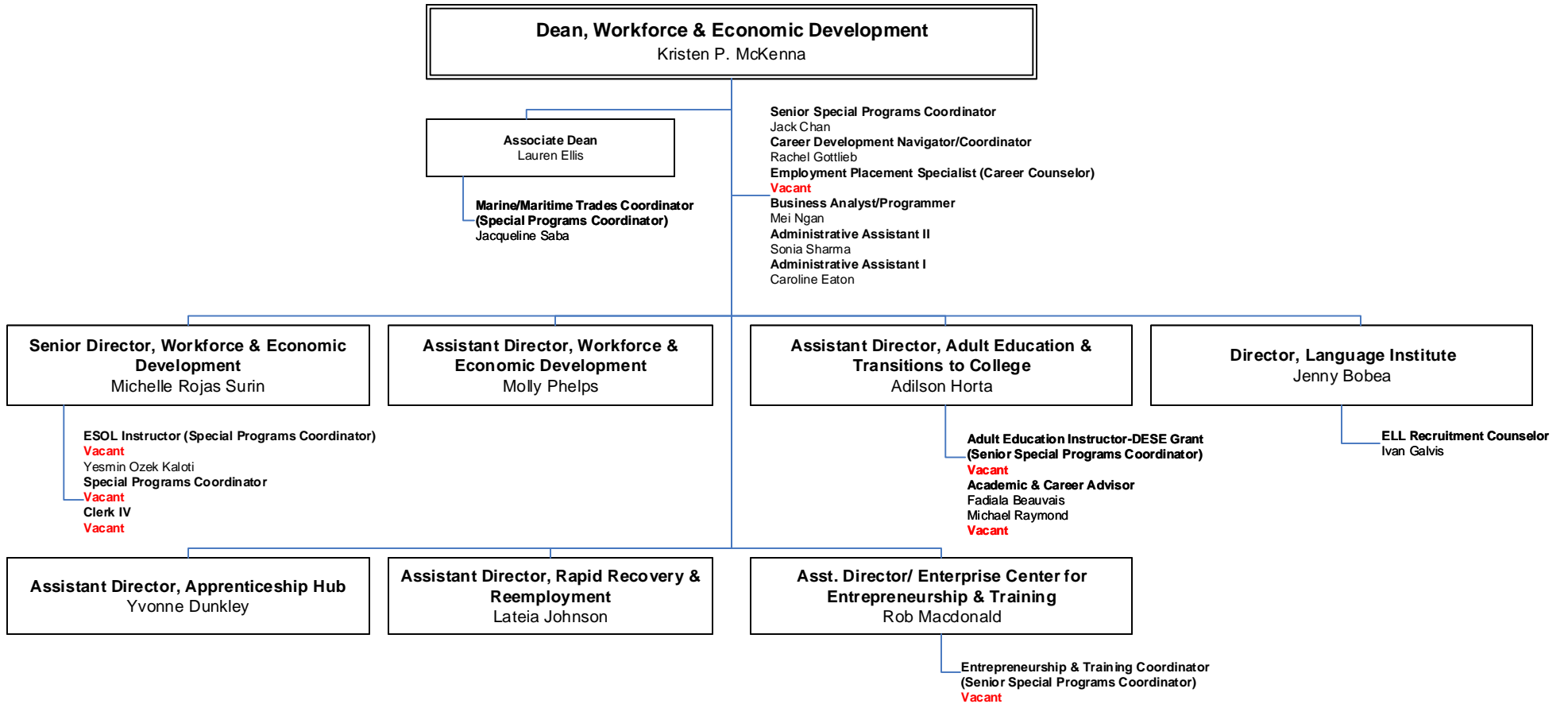
**Trio Talent Search Program**  
Organizational Chart #2L



# BUNKER HILL COMMUNITY COLLEGE

## DIVISION OF ACADEMIC & STUDENT AFFAIRS

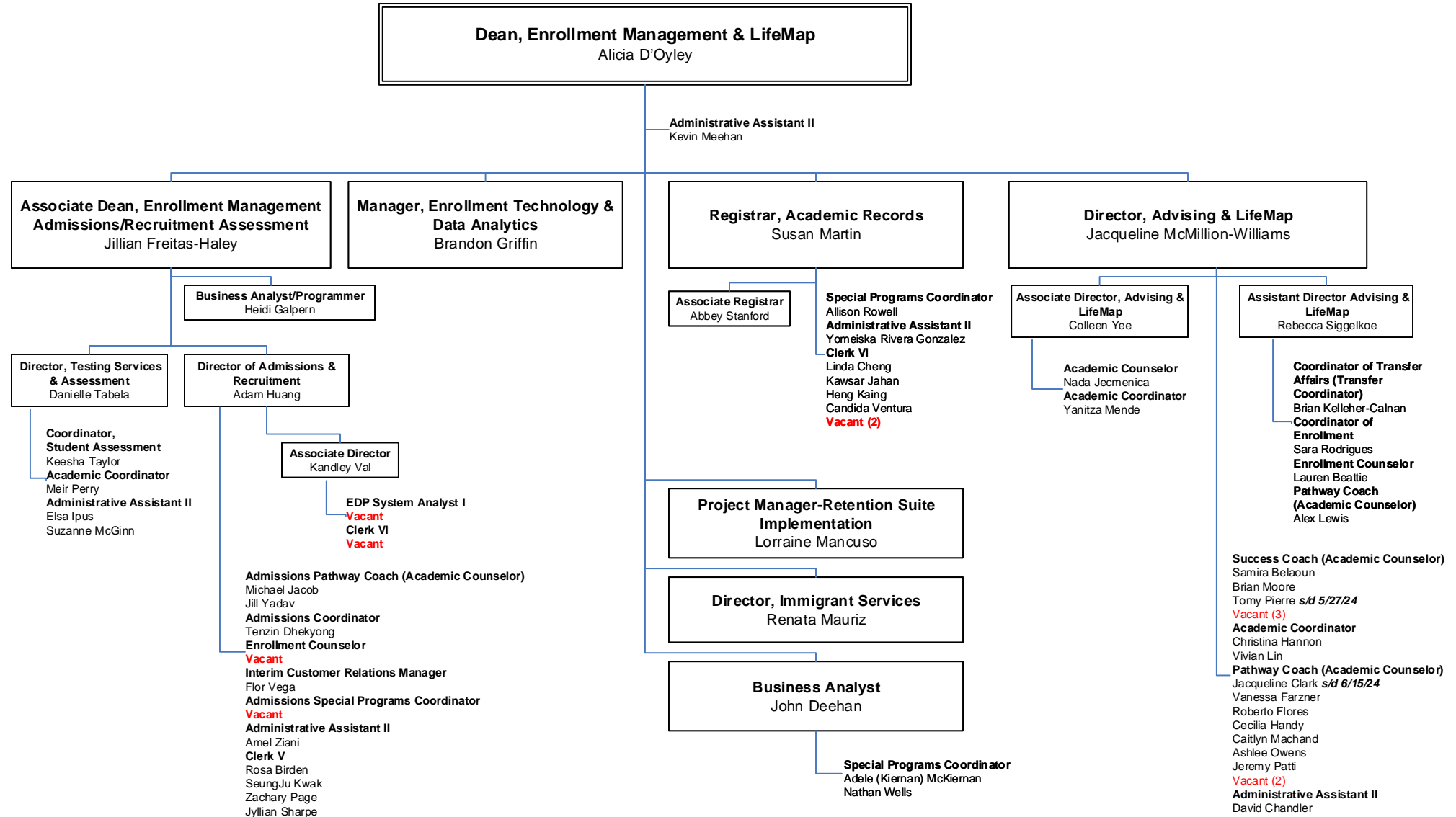
### Workforce & Economic Development Organizational Chart #2M



# BUNKER HILL COMMUNITY COLLEGE

## DIVISION OF ACADEMIC & STUDENT AFFAIRS

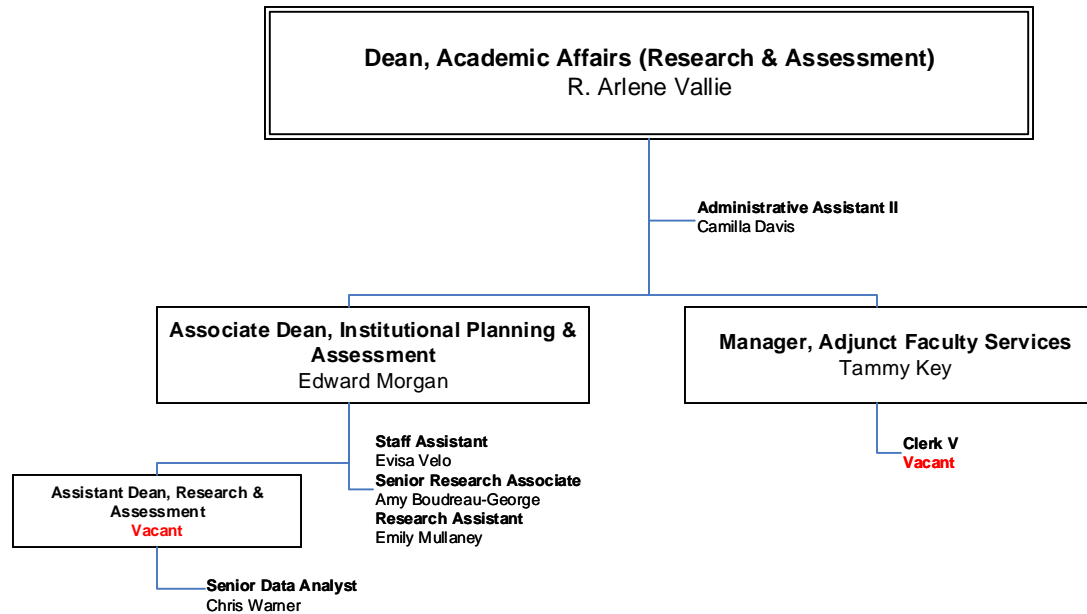
### Enrollment Management & LifeMap Organizational Chart 2N



# BUNKER HILL COMMUNITY COLLEGE

## DIVISION OF ACADEMIC & STUDENT AFFAIRS

### Academic Affairs (Research & Assessment) Organizational Chart #20



# BUNKER HILL COMMUNITY COLLEGE

## DIVISION OF ACADEMIC & STUDENT AFFAIRS

### College Events & Cultural Planning Organizational Chart #2P

